

POLARIS POWER



Products not shown to scale.

A BRAND YOU CAN TRUST

WHY POLARIS, THE POLARIS ADVANTAGE

Our vision is to fuel the passion of riders, workers, and outdoor enthusiasts around the world by delivering innovative, high-quality products and services.

At Polaris Power, we stand behind our product and happily offer a 3 year limited warranty to the original owner against manufacturing defects in materials and workmanship.

BACKED BY A



WARRANTY



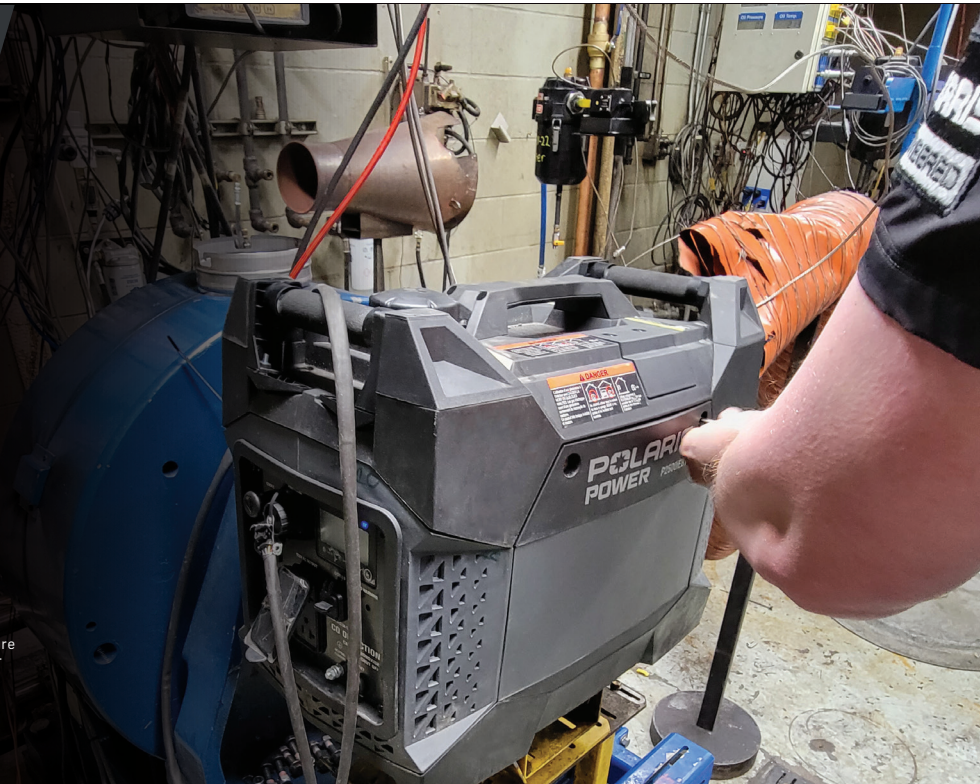
TESTED & TRUSTED

Polaris Power products have gone through 4,500 hours of validation and extensive certification processes to ensure that customers can utilize our products with 100% confidence.

We put all of our generators through extreme testing in all conditions and climates, including:

- 6,000+ running hours in temps -30°F to 110°F
- Noise level testing
- Fuel consumption at different loads

READ, UNDERSTAND AND FOLLOW YOUR OWNER'S MANUAL. Never operate a generator indoors. Generator exhaust contains carbon monoxide vapors and exposure can result in severe injury or death. Gasoline is highly flammable and explosive under certain conditions. Always use extreme care whenever handling gasoline.



CONTENTS

PRODUCT LINEUP 4
 TYPES OF GENERATORS 6
 DETERMINE THE WATTAGE YOU NEED 6

SPECIFICATIONS 8
 PARTS & SERVICE 10
 ACCESSORIES 10



INTRODUCING THE POLARIS POWER PRESSURE WASHER 3700

NEW
PRESSURE WASHER 3700
 2830573

- 3700 psi at 2.5 gpm
- Simpson pro-axial cam pump
- CRX 4-stroke 225cc OHV engine
- Low oil shut-down system
- 10" pneumatic tires

- Heavy-duty steel engine plate
- 1.25" tubular construction
- Professional spray gun
- 35' Morflex® hose
- Thermal relief valve

NEW
EXTENSION HOSE
 2830577



- Designed to be highly flexible and kink resistant
- This 50' cold water hose is equipped with standard M22 threaded connections, a dual o-ring and polyurethane outer jacket that is non-marring and abrasion-resistant for improved durability

NEW
TURBO NOZZLE
 2830579



- 3700 psi .25" QC turbo nozzle delivers a strong jet of oscillating water that cleans faster than standard nozzles
- Made for reliability and durability, this nozzle is easy to use and great at cleaning hard to remove dirt and debris

ACCESSORIES

WHICH GENERATOR IS RIGHT FOR YOU?

WORKER



You need a generator for every day, industrial use applications, and often rely on it to get the job done.

PLAYER



You engage in recreational outdoor activities such as camping, ice fishing, and hiking and need a reliable, lightweight and quiet generator.

SAVE-THE-DAYER



You need a high-powered generator for the occasional, or emergency use that can power an entire home or support large jobs or events.

	WORKER	PLAYER	SAVE-THE-DAYER
FREQUENCY OF USE	High	Medium	Low
WEIGHT TOLERANCE	Medium	Low	High
NOISE LEVEL TOLERANCE	Medium - High	Low	High
PRICE POINT	Medium	Low	High
POWER LEVEL	Medium	Low	High
RECOMMENDATION	P2500iEBT, P3200iE, P5500 or P6500	P2000i, P2500iEBT or P3200iE	P5500 or P6500

PRODUCT LINEUP

P2000i

Inverter Generator

2830532



Tailgating



Off-Grid



Camping

NEW

P2500iEBT

Inverter Generator

2830537



Tailgating



Off-Grid



Camping

P3200iE

Inverter Generator

2830533



DIY Remodeling



One Room Backup



RV'ing

P5500

Open Frame Generator

2830534



Construction



Home Backup



RV'ing

P6500

Open Frame Generator

2830535



Construction



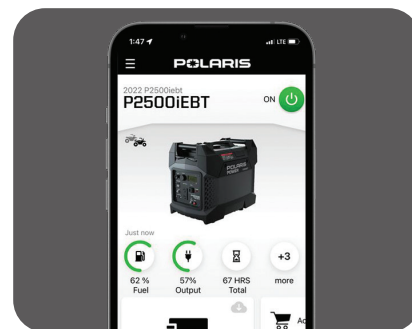
Home Backup



RV'ing



Extension Cord Management



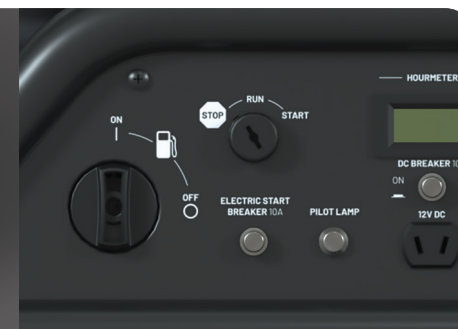
Polaris Mobile/App Compatible for Digital Gauge Readings and Remote Start Features



Key Fob Remote Start



Rough Terrain Wheel



Electric Start

INTRODUCING THE NEW POLARIS MOBILE APP

COMPATIBLE WITH THE P2500iEBT

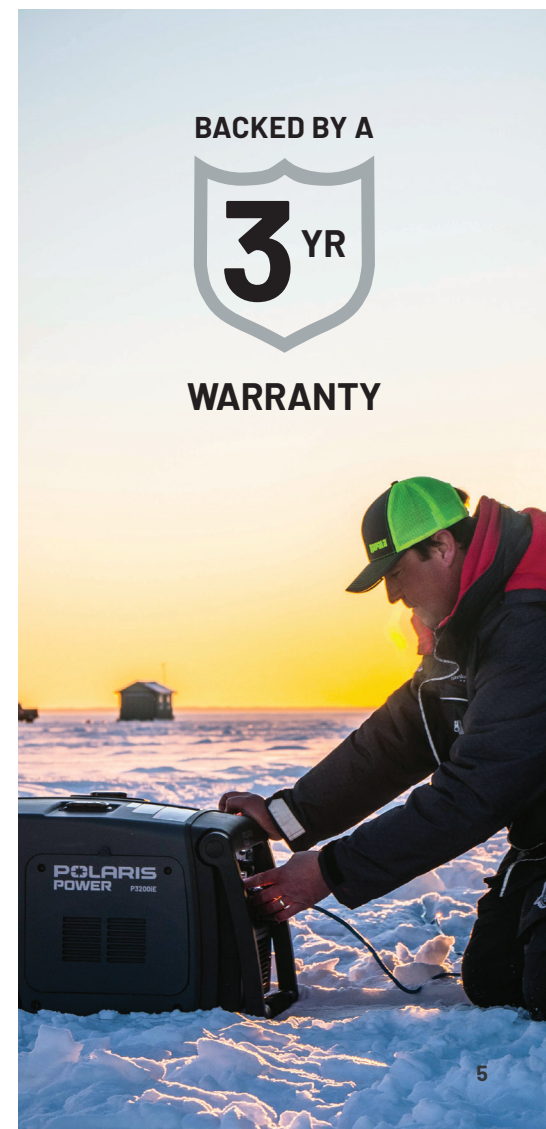
- Start & Stop Generator
- Monitor Fuel Level (with Low Fuel Warning), Output Percentage, Total Hours, Power Output
- Monitor Total Run Time Remaining, AC Wattage, AC Voltage, Engine RPM & Engine Temperature
- Access Service & Owners Manual



BACKED BY A



WARRANTY



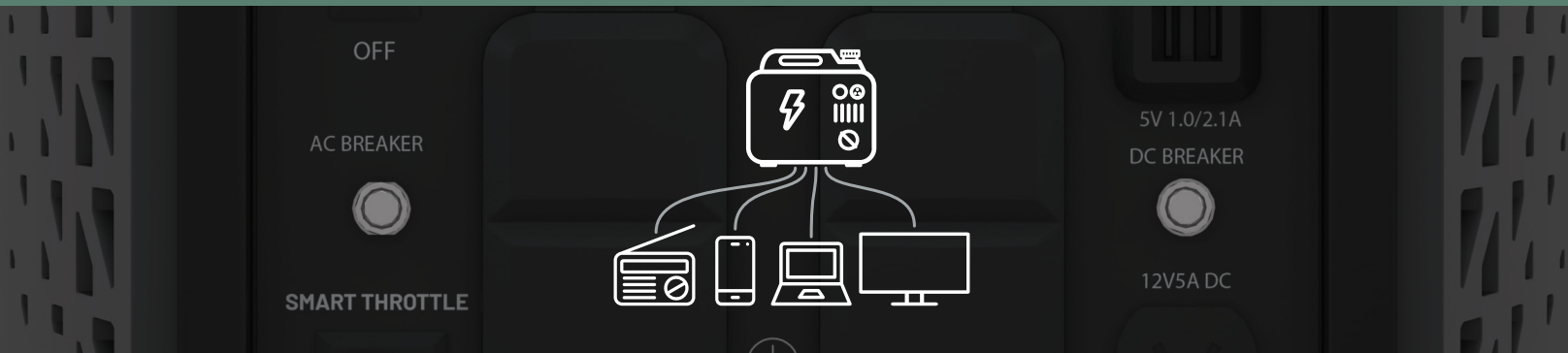
TYPES OF GENERATORS

There are two types of generators, Inverter and Open Frame. Consider how you plan to use your generator to help decide which is right for you.

FIND THE RIGHT GENERATOR FOR YOU

POLARISPOWER.COM/EN-US/HELP-ME-CHOOSE

INVERTER GENERATORS



Inverter generators are composed of an engine, alternator, and inverter. The fuel runs the engine's motor which is attached to an alternator to produce high voltage multiphase AC power. This is then converted to DC power. The DC power is then sent through the inverter and converted to a steady, clean AC power that can be used to power sensitive electrical equipment, without worry of power surges.

SIZE:

Extremely lightweight, portable and remarkably quiet

USED FOR:

Steady, clean power most often used for recreational purposes, but can also be used in storms to power sensitive electrical equipment including laptops, TVs and phones without fear of power surges

P2000i



P2500iEBT



P3200iE



OPEN FRAME GENERATORS



Open frame generators consist of an energy source such as propane or gasoline, which powers a motor attached to an alternator that produces electricity. Unlike an inverter generator, an open frame runs at a rated load at all times which means the power is not a clean sine wave.

SIZE:

Rugged, large-capacity generators to power multiple items

USED FOR:

Well-suited for powering large appliances such as a refrigerator, freezer, furnace, well pump, heat pump, electric water heater, stove and more

P5500



P6500



DETERMINE THE WATTAGE YOU NEED

Identify all the items you would like to power at the same time and determine the total running watts and starting watts.

HOW TO FIND WATTAGE

Watt = Amp x Volt

EXAMPLE

3 Amps x 110 Volts = 330 Watts

WORKER

TOOL OR APPLIANCE	RUNNING WATTS	STARTING WATTS
Quartz Halogen Work Light, 300W	300	0
Airless Sprayer - 1/3 HP	600	1200
Reciprocating Saw	960	960
Electric Drill - 3/8", 4 Amps	440	600
Electric Drill - 1/2", 5.4 Amps	600	900
Hammer Drill	1000	3000
Circular Saw - 7-1/4"	1400	2300
Miter Saw - 10"	1800	1800
Table Saw/Radial Arm Saw - 10"	2000	2000
Welder	2000	2500
Belt Sander	1200	2400
Air Compressor - 1/4 HP	970	1600
Air Compressor - 1 HP	1600	4500

PLAYER

TOOL OR APPLIANCE	RUNNING WATTS	STARTING WATTS
Electric Grill	1650	0
AM/FM Radio	100	0
Box Fan - 20"	200	0
Outdoor Lighting String	250	0
Cell Phone Charger	25	0
Inflator Pump	50	150
Hot Plate	2500	2500
Plasma TV - 42"	220	220
Laptop	250	250

SAVE-THE-DAYER

TOOL OR APPLIANCE	RUNNING WATTS	STARTING WATTS
Essentials		
Light Bulb - 60W	60	0
Refrigerator/Freezer	700	2200
Sump Pump - 1/3 HP	800	1300-2900
Sump Pump - 1/2 HP	1050	2150-4100
Water Well Pump - 1/3 HP	1000	2200
Electric Water Heater	4000	0
Heating/Cooling		
Space Heater	1800	0
Humidifier - 13 Gal	175	0
Furnace Fan Blower - 1/3 HP	700	2350
Furnace Fan Blower - 1/2 HP	800	1400
Window AC - 10,000 BTU	1200	3600
Central AC - 10,000 BTU	1500	4500
Heat Pump	4700	4500

TOOL OR APPLIANCE	RUNNING WATTS	STARTING WATTS
Laundry Room		
Iron	1200	0
Washing Machine	1150	2250
Clothes Dryer - Electric	5400	1350
Clothes Dryer - Gas	700	1800
Kitchen		
Microwave Oven	1000	1400
Refrigerator	400-800	2200
Oven	60	7500
Blender	300	900
Coffee Maker	1000	0
Electric Stove - 8" Element	2100	0
Dishwasher - Hot/Dry	1500	1500
Food Processor	400	0
Toaster	850	0

TOOL OR APPLIANCE	RUNNING WATTS	STARTING WATTS
Family Room		
DVD Player	100	0
Gaming System	40	0
Electric Fire Place	1500	1500
Stereo Receiver	450	0
Other		
Security System	500	0
Garage Door Opener - 1/2 HP	875	2350
Curling Iron	1500	0
Hair Dryer - 1250W	1250	0

SPECIFICATIONS



NEW

P2000i P2500iEBT P3200iE P5500 P6500

TYPE	INVERTER GENERATOR			OPEN FRAME GENERATOR	
	P2000i	P2500iEBT	P3200iE	P5500	P6500
PART NUMBER	2830532	2880537	2830533	2830534	2830535
RATED AC OUTPUT (KW)	1600	2000	2800	5000	6000
MAXIMUM AC OUTPUT (KW)	2000	2500	3200	5500	6500
DC OUTPUT WITH CIRCUIT BREAKER	12V-5A	98	12V-5A	12V-5A	12V-5A
DISPLACEMENT (CC)	79	NA	208	389	420
AC OUTPUT VOLTAGE (V)	120	120	120	120	120
FREQUENCY (HZ)	60	60	60	60	60
DRY WEIGHT (LBS)	53	57	95	217	225
PRODUCT DIMENSIONS (L x W x H)	23.6" x 16.6" x 19.2"	23.6" x 16.6" x 19.2"	25.2" x 19.3" x 19.7"	31.9" x 24" x 25.4"	31.9" x 24" x 25.4"
ENGINE TYPE	4-STROKE, AIR-COOLED, SINGLE CYLINDER				
FUEL TYPE / OIL TYPE	US 87 UNLEADED GAS / SAE 5W-30				
STARTING SYSTEM	RECOIL STARTER	RECOIL AND ELECTRIC STARTER	RECOIL AND ELECTRIC STARTER	RECOIL AND ELECTRIC STARTER	RECOIL AND ELECTRIC STARTER
NOISE LEVEL AT 25% LOAD (DBA)	62	65	67	75	75
NOISE LEVEL AT 100% LOAD (DBA)	66	72	72	5	5
NOISE LEVEL COMPARISONS	NORMAL CONVERSATION OR AC	WASHING MACHINE OR DISHWASHER	WASHING MACHINE OR DISHWASHER	BUSY RESTAURANT	BUSY RESTAURANT
RUN TIME AT 25% LOAD (HRS)	7.6	8	10.1	NA	NA
RUN TIME AT 100% LOAD (HRS)	3.5	4	3.9	NA	NA
OPERATING TEMPERATURE (°F)	-30°F TO 110°F	-30°F TO 110°F	-30°F TO 110°F	-30°F TO 110°F	-30°F TO 110°F
HANDLES/LIFT POINT	SINGLE & DOUBLE HANDLE DESIGN	SINGLE & DOUBLE HANDLE DESIGN	SINGLE & DOUBLE HANDLE DESIGN	SINGLE POINT LIFT	SINGLE POINT LIFT
FUEL GAUGE/INDICATOR		X	X	X	X
HOURLY METER FOR ENGINE	X	X	X	X	X
SIMPLIFIED SHUT OFF & FUEL SHUT OFF VALVE	X	X	X	X	X
EXTENSION CORD MANAGEMENT	X	X	X	X	X
FACTORY INSTALLED COLD WEATHER KIT	X	X	X	X	X
WEATHER COVERS FOR OUTLETS	X	X	X	X	X
PARALLEL CAPABLE (KIT SOLD SEPARATELY)	X	X	X		
KEY FOB REMOTE START & INTEGRATED WHEELS			X		
MULTI-FUNCTIONAL DIGITAL DISPLAY	X	X	X		
ILLUMINATED CONTROL PANEL & FUEL GAUGE	X	X	X		
RUBBER ISOLATING FEET & EASY ACCESS OIL DRAIN	X	X	X		
DC CHARGING CORD INCLUDED	X		X		
3 YEAR WARRANTY	X	X	X	X	X
120V GFCI/AC OUTLET	4	2 NON-GFCI	2	4	4
240V AC OUTLET				1	1
USB	2	2	2		
DC RECEPTACLES	1		1		
AC RECEPTACLES	4	2	3	2	2
PARALLEL OUTLET	X	X	X		
ELECTRONIC AC OVERLOAD CIRCUIT BREAKER	X	X	X	X	X
LOW OIL WARNING & AUTOMATIC SHUT DOWN	X	X	X	X	X
AC AND DC SIMULTANEOUS USAGE	X	X	X	X	X
SMART THROTTLE & FUEL ON/OFF VALVE	X	X	X		
GROUND STUD	X	X	X	X	X
CHOKE	MANUAL	MANUAL & ELECTRIC	ELECTRIC	MANUAL	MANUAL

SPECIFICATIONS

KEY FEATURES

RECEPTACLES, INDICATORS & BREAKERS

INVERTER GENERATORS



Multiple Handle Design Illuminated Control Panel



Smart Throttle USB



Extension Cord Management Multi-Functional Digital Display



Parallel Capable

OPEN FRAME GENERATORS



Extension Cord Management Fuel Gauge



Electric Start Rough Terrain Wheel

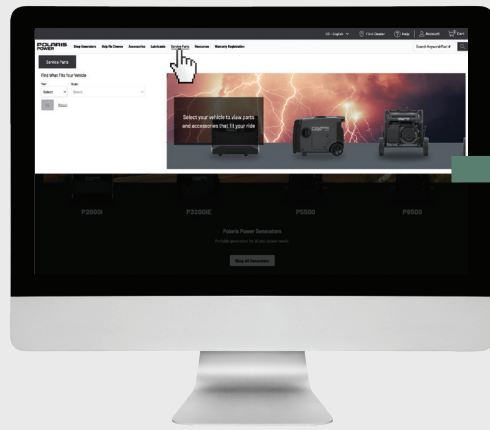
BACKED BY A

3 YR

WARRANTY

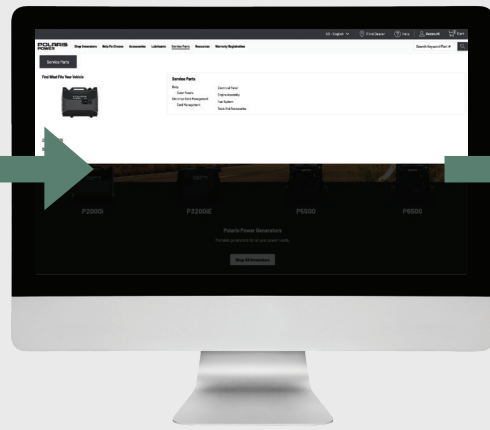
PARTS & SERVICE

CHECK OUT OUR ONLINE PARTS FINDER FOR EASY PARTS LOOK-UP, IDENTIFICATION, ASSEMBLY VIEWS & MORE!



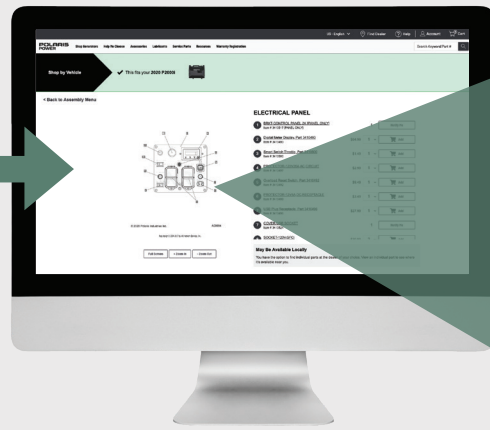
STEP 1

Visit **PolarisPower.com**
Click the **"Service Parts"** tab



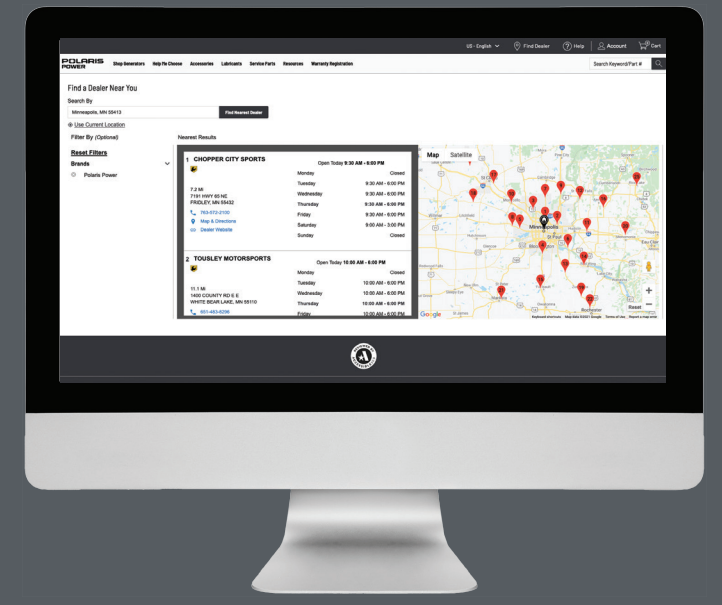
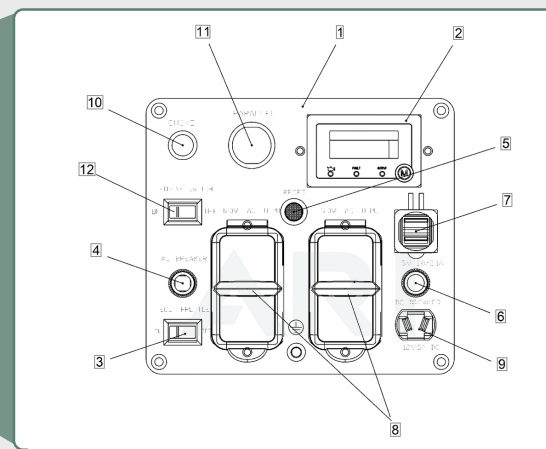
STEP 2

Enter **generator year/model** or
shop by **part number**



STEP 3

Clearly see what parts are
required and order



FIND A DEALER NEAR YOU:

WWW.POLARISPOWER.COM/EN-US/DEALER-LOCATOR

ACCESSORIES



FLUID FUNNEL

2830552

Easily add oil with high accuracy



FLUID SYRINGE

2830553

Easily add and remove fluid



POLARIS POWER INVERTER PARALLEL KIT

P2000i/P2500iEBT/P3200iE
2830536

Polaris Power Inverter Parallel Kit allows any combination of two Polaris inverter generators to be coupled together to receive the full power of both generators in one place. The unit has one 120V 30A L5-30R outlet, two 120V 5-20A GFCI outlets, as well as one 120V 50A 14-50R outlet allowing a consumer to power more than ever before. The unit also has a bright LED light that illuminates the faceplate making it easier to see the outlets in even the darkest of places.

Works with 2020-2022 inverter generators including P2000i, P2500iEBT and P3200iE. Can be used with (2) P2000i's OR (2) P2500iEBT's OR (2) P3200iE's OR (1) P2000i and (1) P3200iE.



ALL WEATHER COVERS

P2000i/P2500iEBT **2830540** P3200iE **2830541** P5500/P6500 **2830542**

Polaris Power All Weather Covers are perfectly designed to fit the Polaris Power generator lineup.



HIGH ALTITUDE MODIFICATION KITS

P2000i **2884865** P2500iEBT **2889340** P3200iE **2884866** P5500/P6500 **2884867**

High altitude operation can be improved by specific modifications to the carburetor. If always operating the generator at altitudes above 3,000 ft (915 m), have an authorized Polaris servicing dealer perform the carburetor modification. The engine will meet each emission standard throughout its life when operated at high altitude with the carburetor modifications for high altitude operation. With the carburetor modification, engine horsepower will decrease by approximately 3.5% for every 1,000 ft (300 m) increase in altitude. The effect of altitude on horsepower will be greater if no carburetor modification are made.

CAUTION: Operation of the generator at an altitude lower than the carburetor is rated for may result in reduced performance, overheating, and serious engine damage caused by an excessively lean air/fuel mixture. Be sure to have any modification reversed at lower altitudes.



POLARIS POWER SMALL ENGINE OIL

1 Quart
2879383

4-Cycle Engine Oil. Synthetic Blend-5W-30. Polaris Engineering tested and approved. Specifically formulated for Polaris Power. Corrosion inhibitors protect against rust and oxidation during long-term storage. Easy starting in extreme cold environments. Product contains 1 U.S. Quart of oil.



2D BATTERY-OPERATED SIPHON PUMP

2830513

Liquid transfer pumps 5-6 quarts/
min suctioning power



FLUID TRAY

2830551

Holds up to 8 quarts of fluid

WARRANTY COVERAGE AND EXCLUSIONS

Limitation of Warranties and Remedies

This Polaris limited warranty excludes any failures that are not caused by a defect in material or workmanship. This warranty does not cover claims of defective design. This warranty also does not cover accidental damage, normal wear and tear, abuse or improper handling. This warranty also does not cover any unit that has been altered structurally, modified, neglected, improperly maintained, or used for purposes other than for which it was designed.

This warranty excludes damages or failures resulting from improper lubrication; improper engine timing; improper fuel; surface imperfections caused by external stress, heat, cold or contamination; operator error abuse; improper component alignment, tension, adjustment or altitude compensation; failure due to snow, water, dirt or other foreign substance ingestion/contamination; improper maintenance; modified components; use of aftermarket components resulting in failure; unauthorized repairs; repairs made after the warranty period expires or by an unauthorized repair center. This warranty will not apply to any product which has been damaged by abuse, accident, fire or any other casualty not determined to be a defect or materials of workmanship.

WARRANTY: Limited Warranty

Polaris Sales Inc., 2100 Highway 55, Medina, MN 55340 gives a THREE YEAR LIMITED WARRANTY for consumer use and a ONE YEAR LIMITED WARRANTY for commercial use on all components of your Polaris generator or pressure washer against defects in material workmanship. This warranty covers parts and labor charges for repair or replacement of defective parts and begins on the date of purchase.

This warranty is transferable to another owner during the warranty period through a Polaris dealer, but any such transfer will not extend the original term of the warranty.

REGISTRATION

The Warranty Registration Form must be completed by the purchaser and submitted to Polaris within ten days of purchase. Upon receipt of this registration, Polaris will record the registration information for warranty. No verification of registration will be sent to the purchaser. Registration cards can be found in the original box of the product and can be mailed into Polaris at the address listed on the card, or completed at www.polarispower.com/warranty. NO WARRANTY COVERAGE WILL BE ALLOWED UNLESS YOUR GENERATOR OR PRESSURE WASHER IS REGISTERED WITH POLARIS.

CONTACT INFORMATION

If you have any questions regarding your warranty rights and responsibilities, please contact Polaris Customer Assistance at 1-800-POLARIS (1-800-765-2747). If your questions regard the emissions warranty in California, you may also contact the California Air Resources Board at 9528 Telstar Avenue, El Monte, CA 91731.

United States and Canada: 1-800-POLARIS (1-800-765-2747)
French Canadian: 1-800-268-6334

THE POWER TO EMPOWER

At Polaris Power, we are committed to powering more. We proudly donate 3% of our profits by providing portable power to areas affected by natural disasters and the organizations providing relief in North America.



[POLARISPOWER.COM](https://www.polarispower.com)

Read, understand and follow your owner's manual. Never operate a generator or pressure washer indoors. Exhaust contains carbon monoxide vapors and exposure can result in severe injury or death. Gasoline is highly flammable and explosive under certain conditions. Always use extreme care whenever handling gasoline.

Unless noted, trademarks are the property of Polaris Industries Inc. Morflex[®] is a registered trademark of FNA Group, Inc. Fitment and availability are subject to change at any moment. Copyright © 2022 Polaris Industries Inc. All rights reserved.

POLARIS

MY23 POLARIS POWER • 9959036